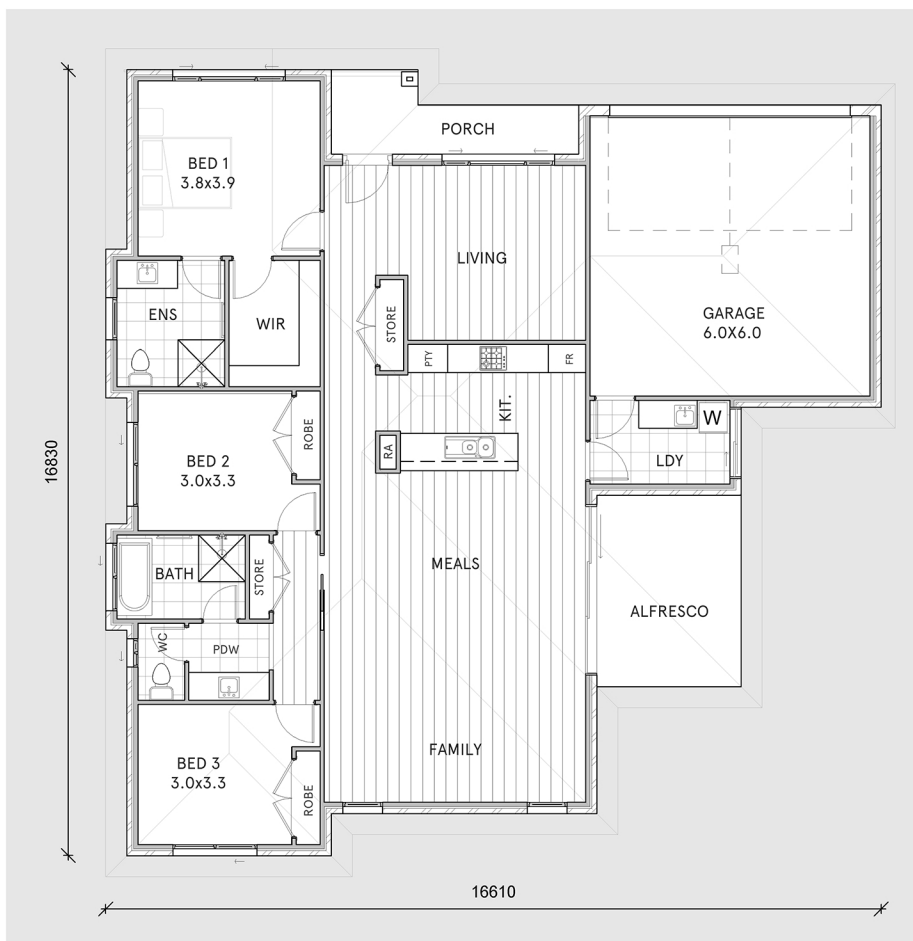


Andover 23

Contemporary 3 bedroom home
with Seperate Living and Alfresco



LIVING	162m ²
GARAGE	40m ²
ALFRESCO	13m ²
PORCH	7m ²
<u>TOTAL</u>	<u>222m²</u>



- * Spacious open plan kitchen, family and meals areas
- * Large outdoor alfresco accessed from family room
- * Generous master bedroom with WIR and ensuite
- * Two separate family living spaces