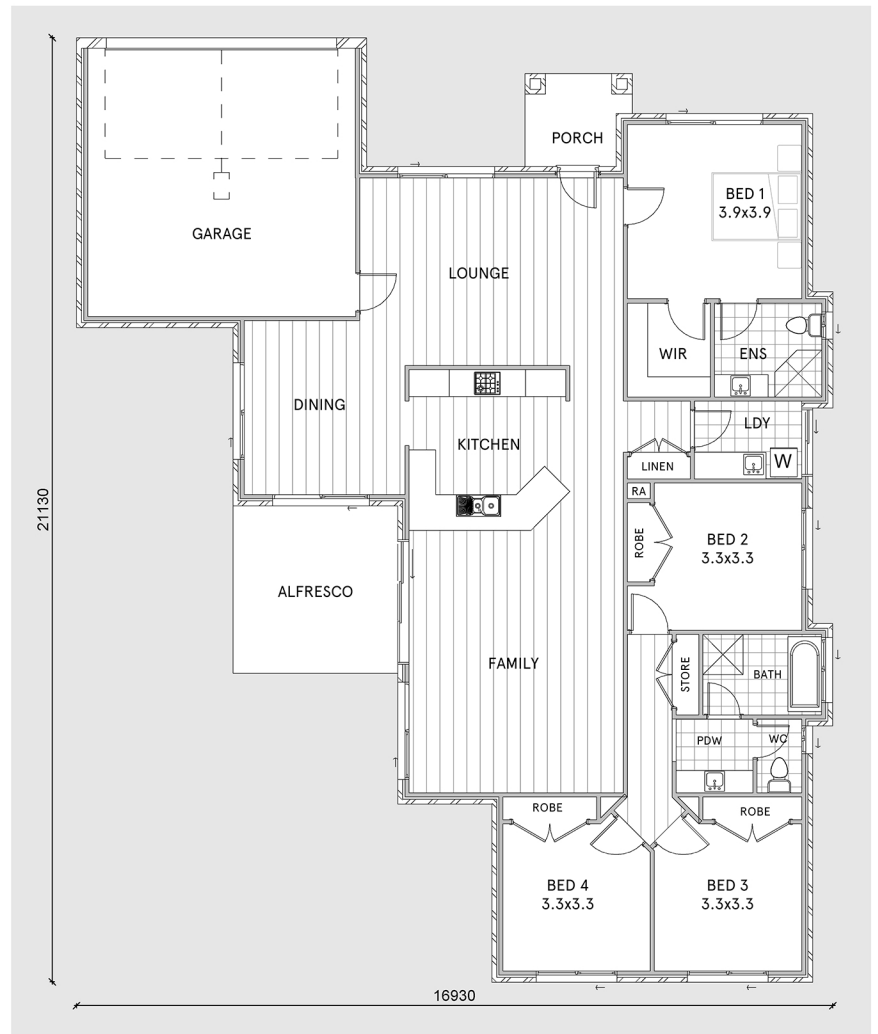


# Bemidji 24

Contemporary 4 bedroom home  
with Seperate Living and Alfresco



LIVING	187m <sup>2</sup>
GARAGE	41m <sup>2</sup>
ALFRESCO	14m <sup>2</sup>
PORCH	5m <sup>2</sup>
<u>TOTAL</u>	<u>247m<sup>2</sup></u>



- \* Spacious open plan kitchen, family and meals areas
- \* Large outdoor alfresco accessed from family room
- \* Generous master bedroom with WIR and ensuite
- \* Two separate family living spaces