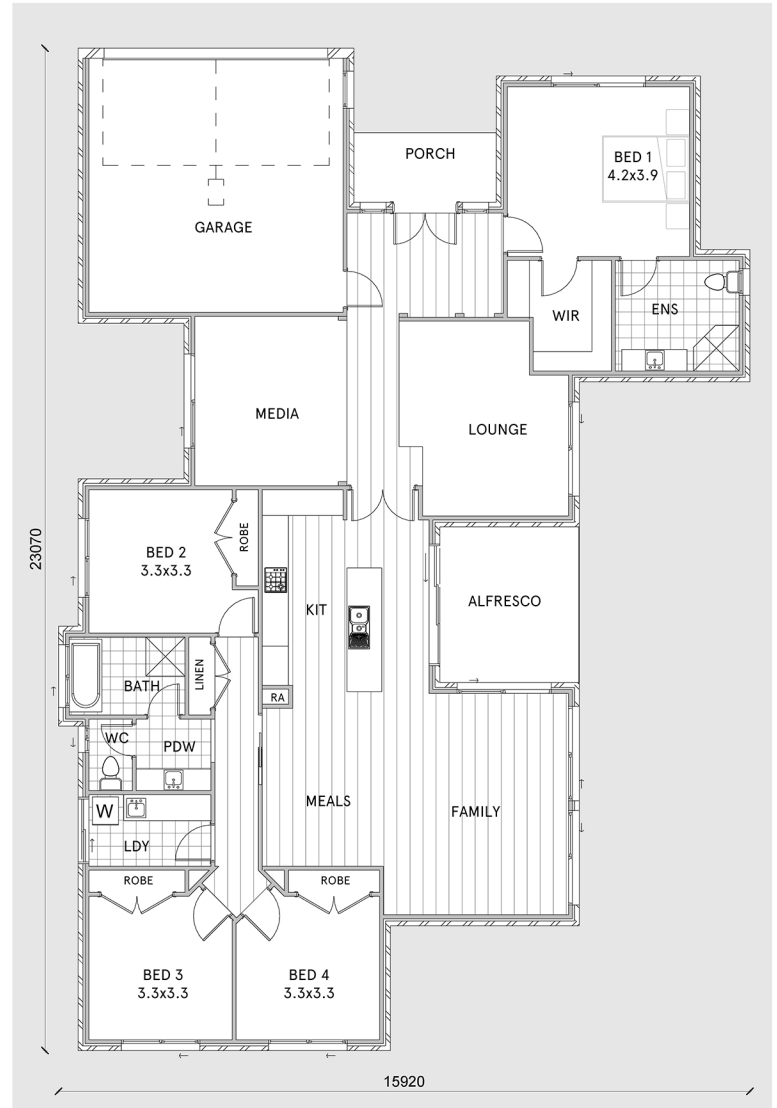


Edgewood 28

Contemporary 4 bedroom home
with Seperate Living, Media and Alfresco



LIVING	205m ²
GARAGE	39m ²
ALFRESCO	12m ²
PORCH	5m ²
<u>TOTAL</u>	<u>261m²</u>



- * Spacious open plan kitchen, family and meals areas
- * Large outdoor alfresco accessed from family room
- * Generous master bedroom with WIR and ensuite
- * Two separate family living spaces