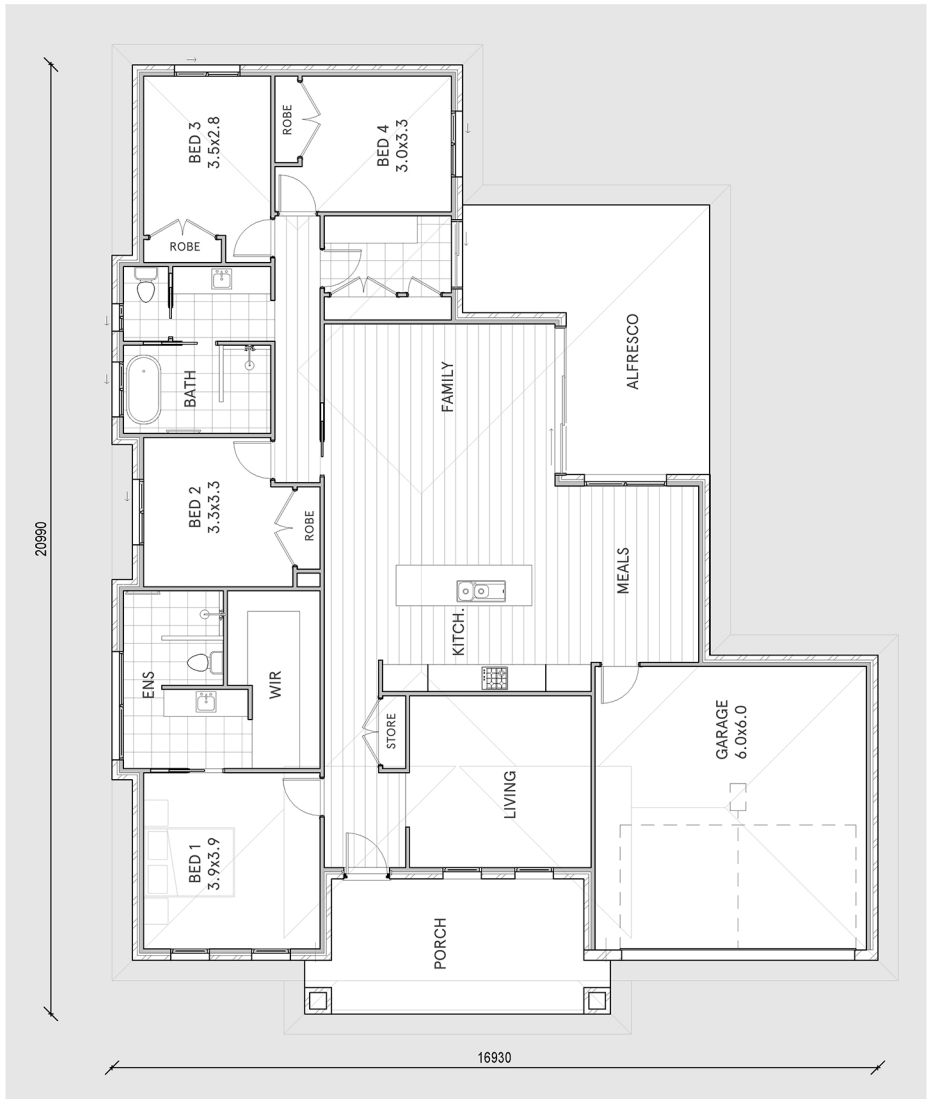


Kingston

Contemporary 4 bedroom home
with open Living area & Alfresco



LIVING	188m ²
GARAGE	42m ²
ALFRESCO	18m ²
PORCH	11m ²
<u>TOTAL</u>	<u>259m²</u>



- * Spacious open plan kitchen, family and meals areas
- * Large outdoor alfresco accessed from family room
- * Generous master bedroom with WIR and ensuite
- * Two separate family living spaces