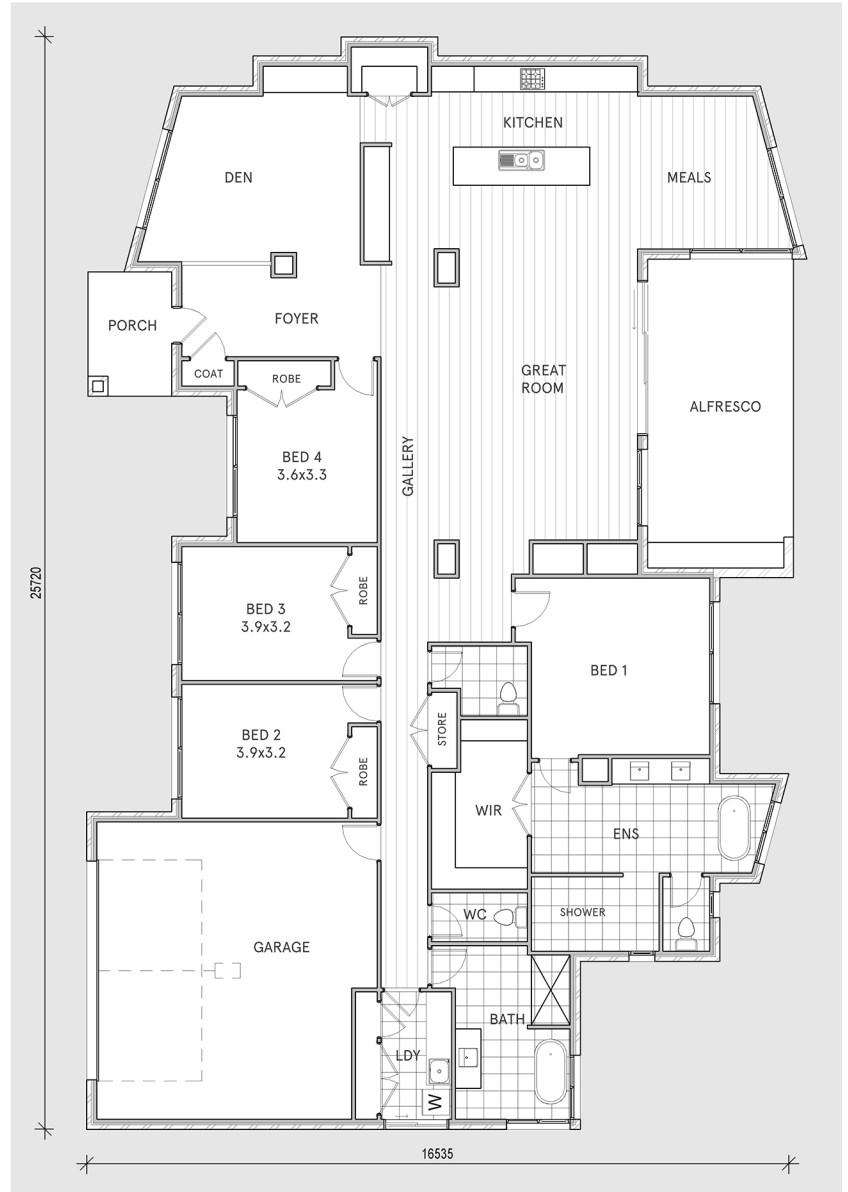


# Minnetonka

Contemporary 4 bedroom home  
with seperate living and Alfresco



LIVING	270m <sup>2</sup>
GARAGE	50m <sup>2</sup>
ALFRESCO	25m <sup>2</sup>
PORCH	6m <sup>2</sup>
<u>TOTAL</u>	<u>351m<sup>2</sup></u>



- \* Spacious open plan kitchen, family and meals areas
- \* Large outdoor alfresco accessed from family room
- \* Generous master bedroom with WIR and ensuite
- \* Two separate family living spaces