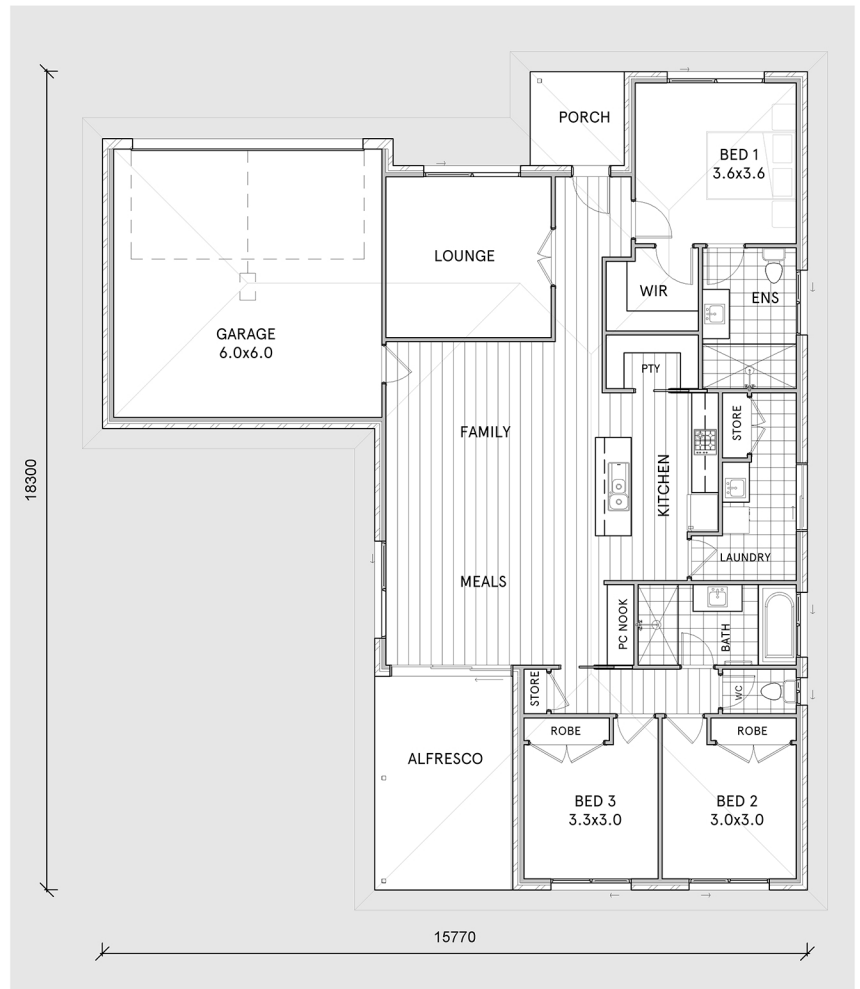


Stratford 23

Contemporary 3 bedroom home
with Alfresco



LIVING	149m ²
GARAGE	42m ²
ALFRESCO	15m ²
PORCH	4m ²
<u>TOTAL</u>	<u>210m²</u>



- * Spacious open plan kitchen, family and meals areas
- * Large outdoor alfresco accessed from family room
- * Generous master bedroom with WIR and ensuite
- * Two separate family living spaces