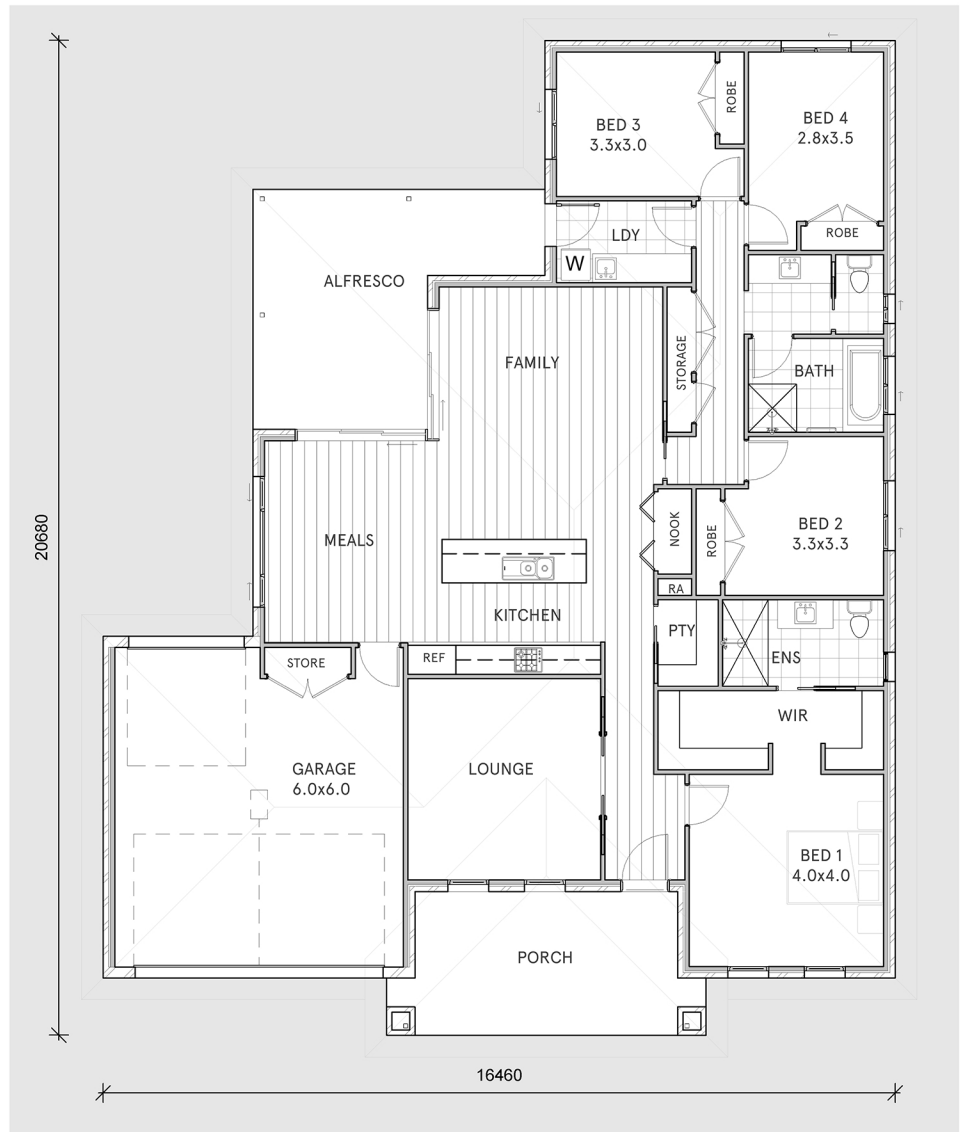


Woodbury 29

Contemporary 4 bedroom home
with seperate Living and Alfresco



LIVING	186m ²
GARAGE	45m ²
ALFRESCO	22m ²
PORCH	18m ²
<u>TOTAL</u>	<u>271m²</u>



- * Spacious open plan kitchen, family and meals areas
- * Large outdoor alfresco accessed from family room
- * Generous master bedroom with WIR and ensuite
- * Two separate family living spaces