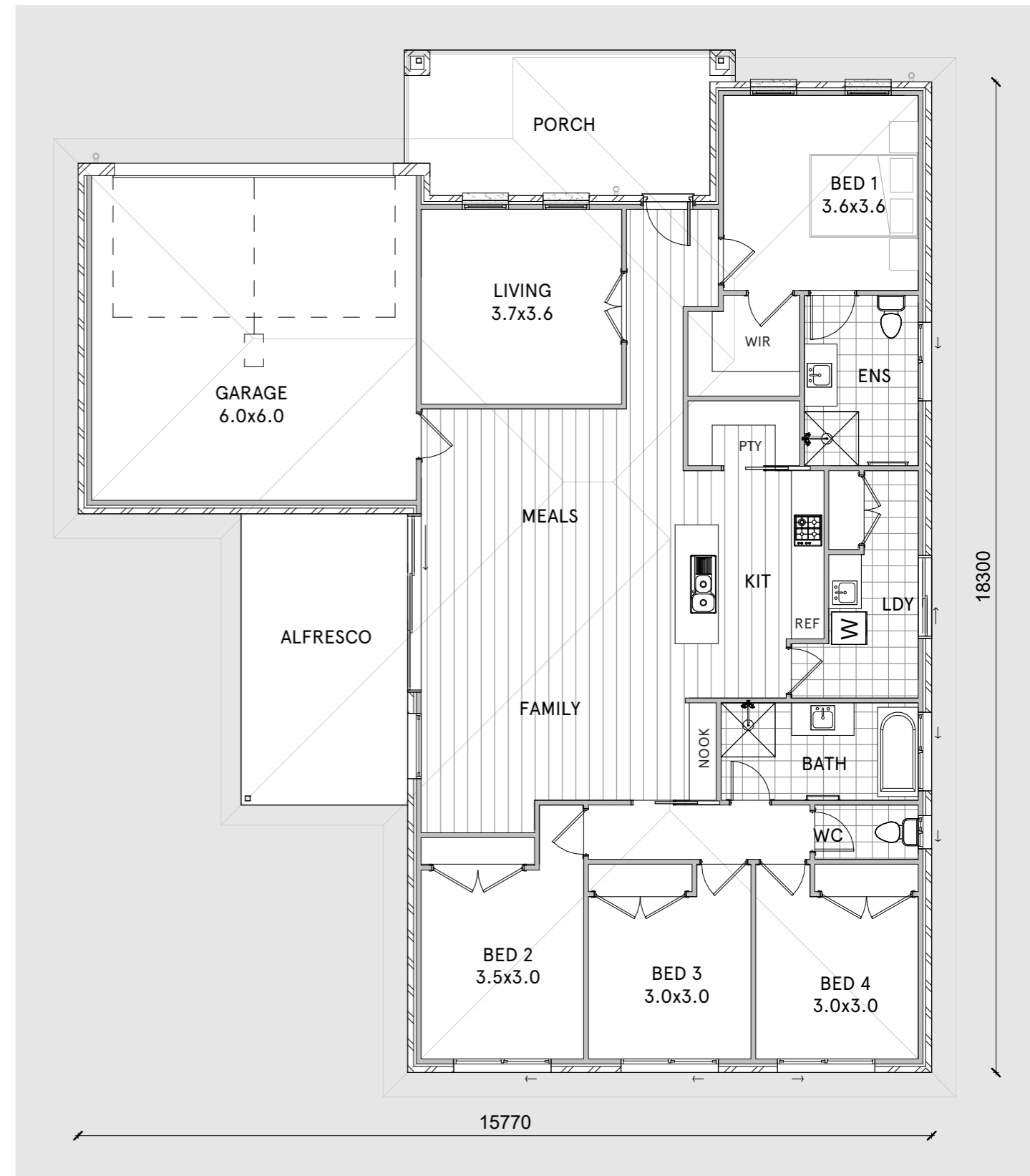


# Lot 95 Coppabella Dr.

## 847m<sup>2</sup>



- LIVING	164 m <sup>2</sup>
- GARAGE	41 m <sup>2</sup>
- ALFRESCO	17 m <sup>2</sup>
- PORCH	15 m <sup>2</sup>
	237 m <sup>2</sup>



AS PER THE CONDITIONS OF THE CONTRACT, THESE DRAWINGS ARE A PRECISE REPRESENTATION OF WHAT IS TO BE BUILT AND ITEMS NOT ON THIS DRAWING OR IN THE SPECIFICATION ARE DEEMED NOT PART OF THE CONTRACT

**MATT JENKINS**  
H O M E S

PH. 02 6925 6888

[info@mattjenkinshomes.com.au](mailto:info@mattjenkinshomes.com.au)

po box 8757, Wagga Wagga, NSW 2650

DO NOT SCALE OF THIS DRAWING. DISCREPANCIES ARE TO BE REFERRED TO THE BUILDER PRIOR TO COMMENCING WORK. FINISH AND WORKMANSHIP TO COMPLY WITH THE BCA AND RELEVANT AUSTRALIAN STANDARDS. MATERIALS TO BE SUPPLIED NEW AND UNDAMAGED.